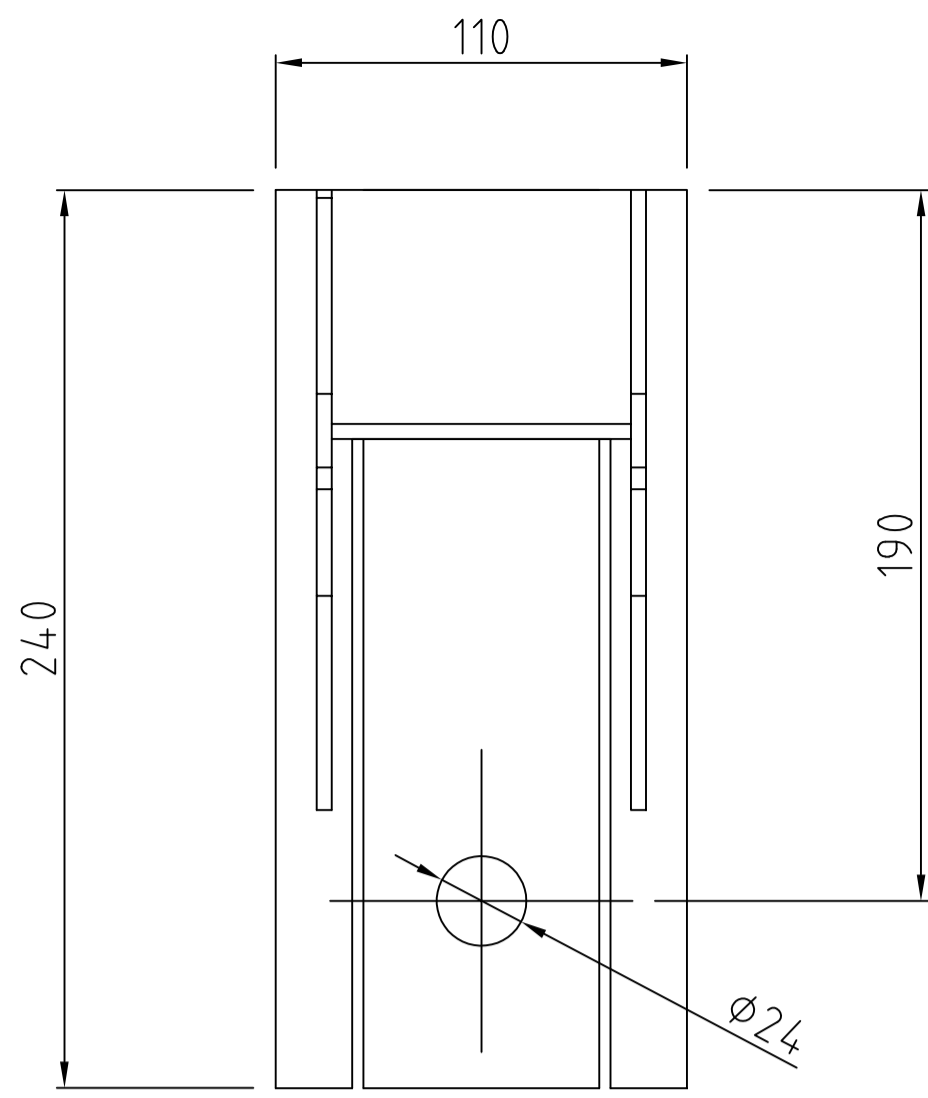
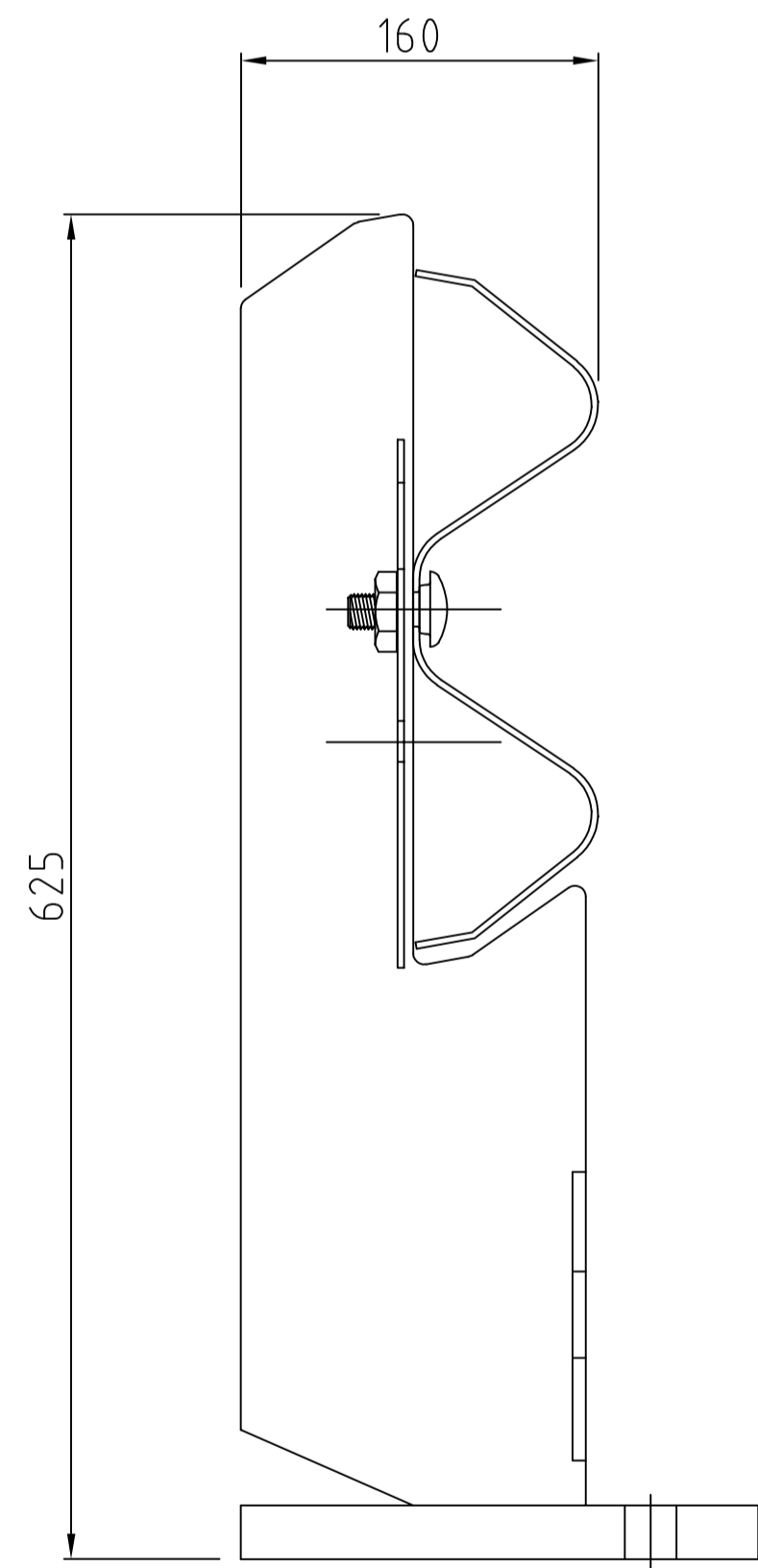


RHINO-STOP HAS BEEN ASSESSED TO EXCEED THE 30kN IMPACT LOAD AS DESCRIBED IN AS/NZS 1170.1 FOR LIGHT TRAFFIC AREAS.

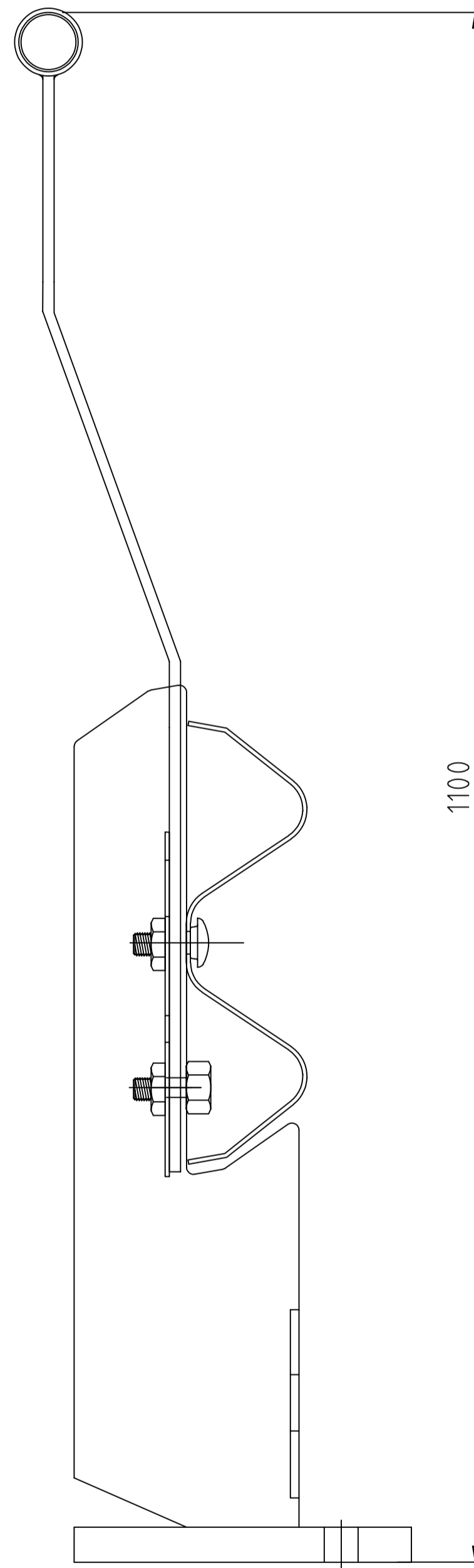
MAX. POST SPACING 2m



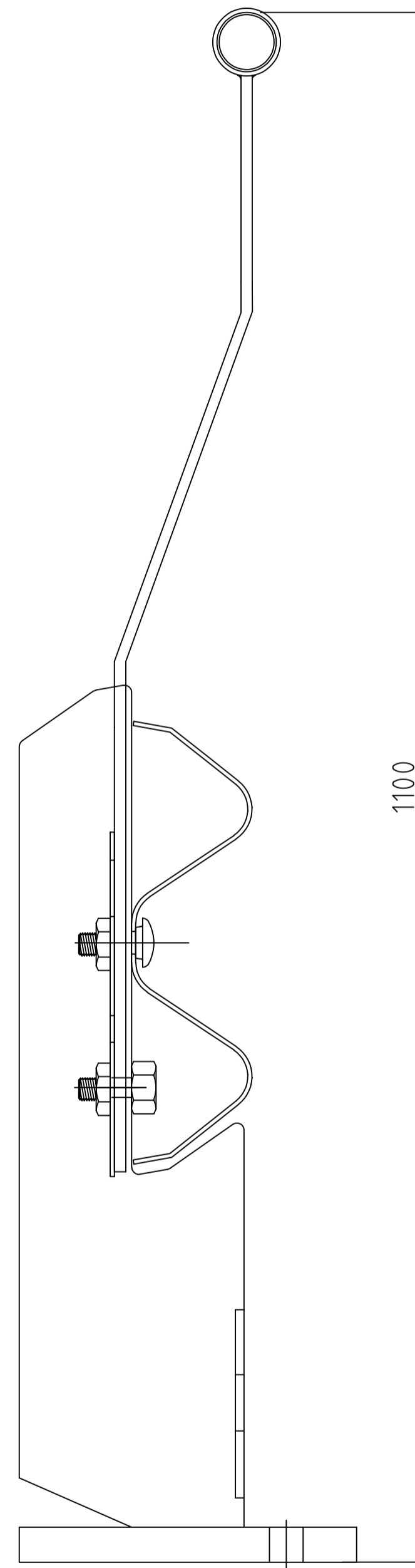
BASE PLATE DETAIL



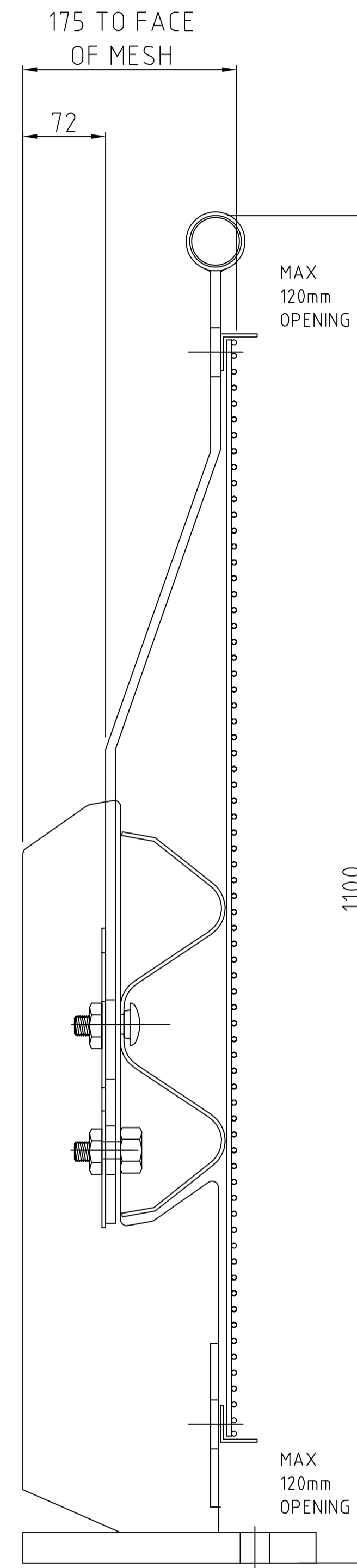
RHINO- STOP TYPE 1
GUARDRAIL



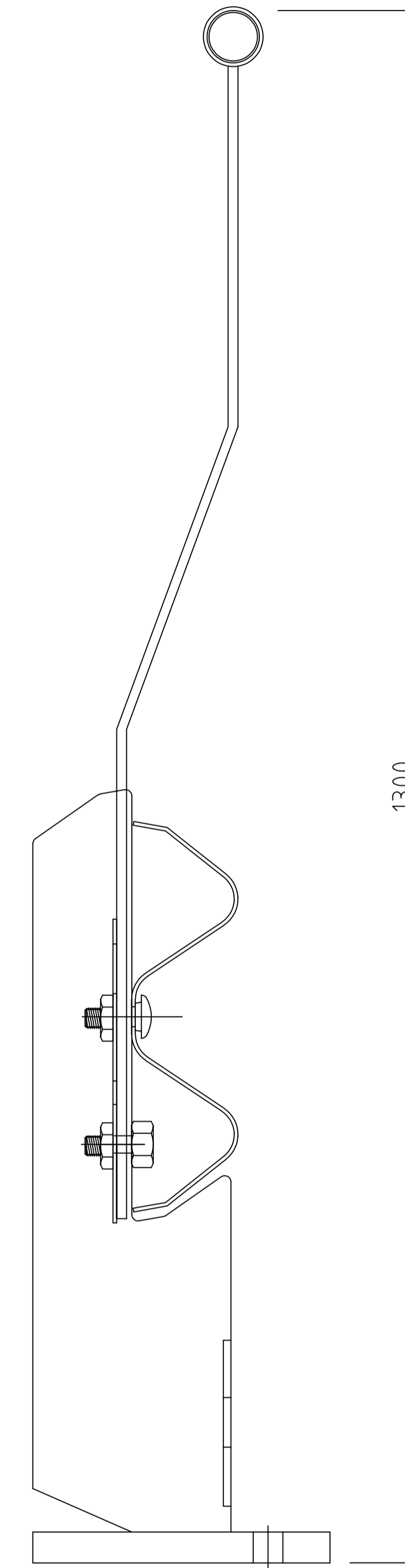
RHINO-STOP TYPE 2
GUARDRAIL &
OFFSIDE BALUSTRADE



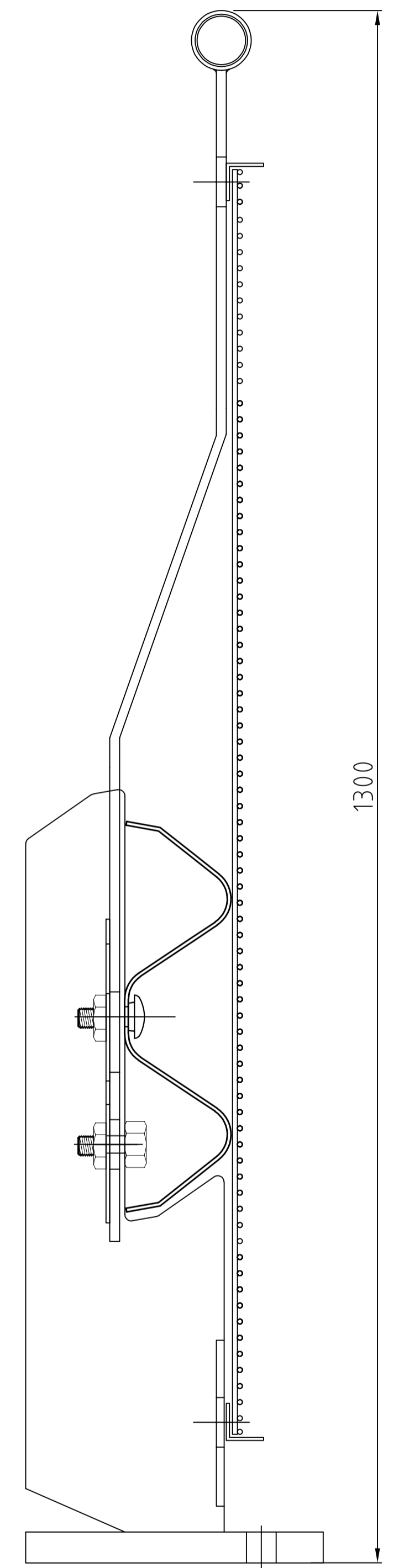
RHINO-STOP TYPE 3
GUARDRAIL &
NEAR SIDE BALUSTRADE



RHINO-STOP TYPE 4
GUARDRAIL, BALUSTRADE &
ANTI-CLIMB MESH



RHINO-STOP TYPE 5
GUARDRAIL &
SIGHT RAIL



RHINO-STOP TYPE 6
GUARDRAIL, BALUSTRADE,
ANTI-CLIMB MESH & SIGHT RAIL

REV	DATE	DESCRIPTION	DRAWN	APPRD.	REV	DATE	DESCRIPTION	DRAWN	APPRD.
D	11.04.18	NEW RHINO BASEPLATE ADDED	MS	TC					
C	18.07.17	NEW HANDRAIL EXTENSIONS ADDED	MS	TC					
B	21.07.14	REISSUED FOR INITIAL ISSUE	DB	TC					
A	05.11.13	INITIAL ISSUE	DB	TC					



DRAWING DESCRIPTION

RHINO-STOP ASSEMBLY TYPES

DRAWING REFERENCE

GR-WB-026

DRAWN BY	M. SEAL	DIMENSIONS	mm
CHECKED	H. WALLACE	SCALE	NTS
APPROVED	T. COLQUHOUN		